



**CATALOG**

**HIGH PERFORMANCE AC DRIVE**

**[WWW.KJGENTERPRISE.COM](http://WWW.KJGENTERPRISE.COM)**

# ¿ABOUT US?



## OUR OBJECTIVES

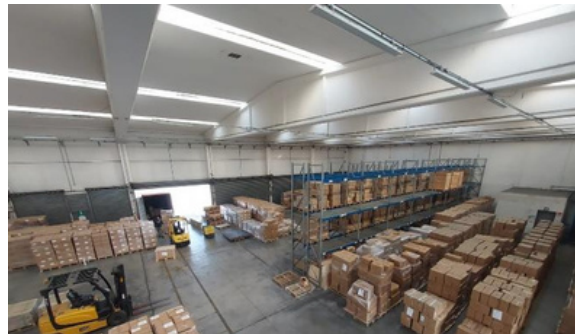
**To create value and solutions in the supply chain of the companies, offering different alternatives of acquisition in products or raw materials, reducing production, operative and logistic costs in the acquisition process.**

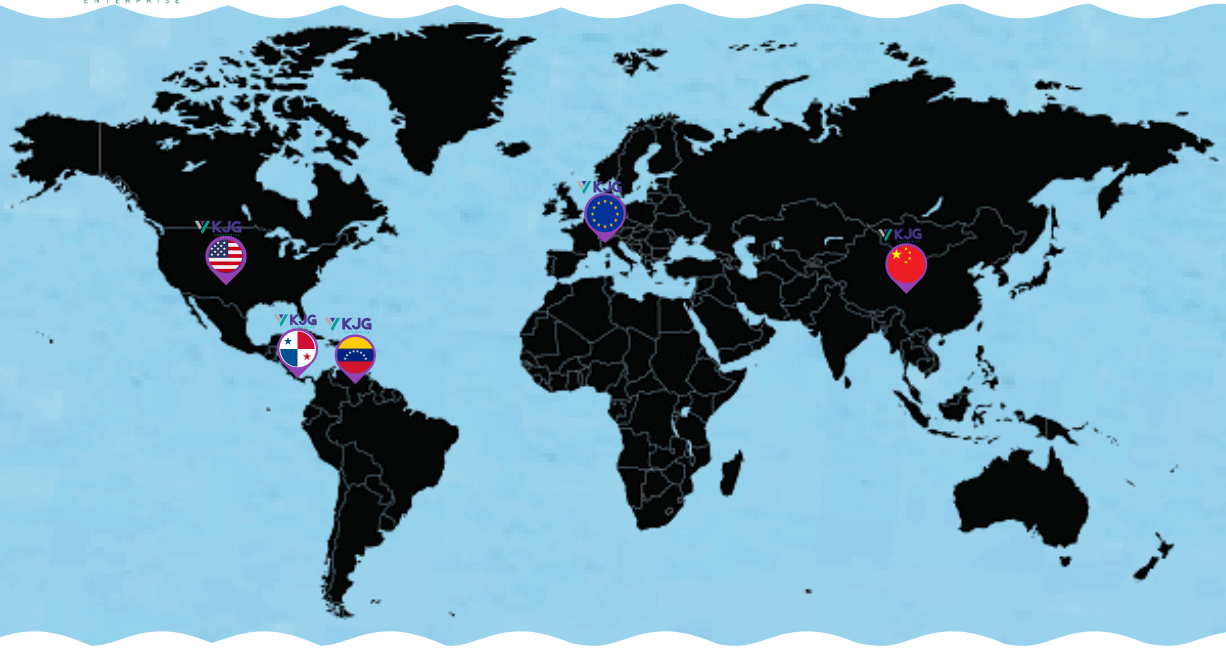
## MISSION

**Our mission is to satisfy the needs of each of our customers, whether they are small, medium or large, guaranteeing quality, price and less work, no matter where they are in the world, providing all the necessary facilities to strengthen their supply chain with our extensive network of contacts, factories and logistics and management partners.**

## VISION

**Our vision is to continue building and consolidating a specialized, efficient and effective organization in the supply of products, diversifying solutions for the needs of each one of our customers.**





# CONTACT US

[WWW.KJGENTERPRISE.COM](http://WWW.KJGENTERPRISE.COM)

0

[info@kjgenterprise.com](mailto:info@kjgenterprise.com)



**We are also here**



**@KJGWORLDWIDE**

## PRODUCT INDUCTION

### FU9000A GENERAL PURPOSE AC DRIVE

### FEATURES

- \* Open loop V/F & SVC control
- \* Closed loop FVC control
- \* Starting torque

The new FU9000A is developed on new 150% at 0.25 Hz for SVC hardware platform. 180% at 0 Hz for FVC  
The drive has high performance, complete

- \* Communication options: protection functions, longer life endurance.

- Modbus-RTU
- Profibus-DP
- CANopen
- CANlink

- \* Automatic torque boost
- \* Slip compensation
- \* Simplified parameter for easy startup
- \* 4-independent S-ramps

- \* Flexible programmable I/O connection

- \* User programmable function
- \* Variable DC-injection braking
- \* Comprehensive trip diagnostic
- \* Output frequency 500 Hz
- \* Built-in dynamic braking unit



## IEC STANDARDS

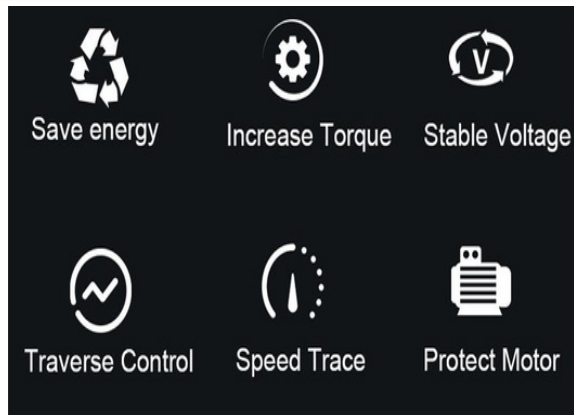
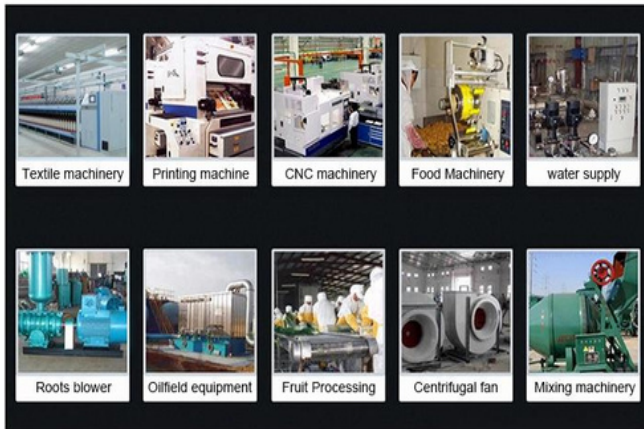


The FU9000A series AC drive complies with the following LVD and EMC directives and standards.

Directive	Directive Code	Standard
EMC Directive	2004/ 18/ EC	EN61800-3 EN61000-3-2 EN61000-3-3
LVD Directive	2007/ 95/ EC	EN61800-5-1

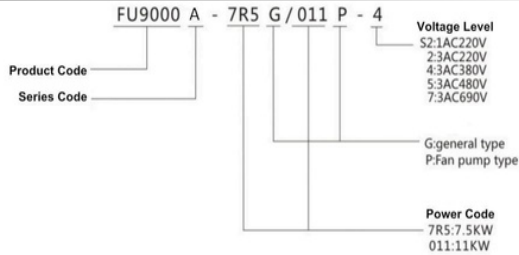
The FU9000A series AC drive complies with the requirements of standard IEC/EN 61800-3 on the condition of correct installation and use by following the instructions.

## APPLICATION EXAMPLES



For more applications, welcome to contact us for professional solution suggestions.

## TYPE DESIGNATION



MODEL	INPUT VOLTAGE	RATED POWER (KW)	RATED INPUT CURRENT (A)	RATED OUTPUT CURRENT (A)
FU9000A-0R7G-S2	Single Phase 220V±15%	0.75	8.2	4
FU9000A-1R5G-S2		1.5	14	7
FU9000A-2R2G-S2		2.2	23	9.6
FU9000A-0R7G-2	3 Phase 220V±15%	0.75	5	3.8
FU9000A-1R5G-2		1.5	5.8	5.1
FU9000A-2R2G-2		2.2	10.5	9
FU9000A-004G-2		4	14.6	13
FU9000A-5R5G-2		5.5	26	25
FU9000A-7R5G-2		7.5	35	32
FU9000A-011G-2		11	46.5	45
FU9000A-015G-2		15	62	60
FU9000A-018G-2		18.5	76	75
FU9000A-022G-2		22	92	91
FU9000A-030G-2		30	113	112
FU9000A-037G-2		37	157	150
FU9000A-D45G-2		45	180	176
FU9000A-055G-2		55	214	210

## TYPE DESIGNATION

MODEL	INPUT VOLTAGE	RATED POWER (KW)	RATED INPUT CURRENT (A)	RATED OUTPUT CURRENT (A)
FU9000A-0R7G-4	3 phase 380V±15%	0.75	3.4	2.5
FU9000A-1R5G-4		1.5	5	3.7
FU9000A-2R2G-4		22	5.8	5
FU9000A-004G/5R5P-4		4.0/5.5	10/15	9/13
FU9000A-5R5G/7R5P-4		5.5/7.5	15/20	13/17
FU9000A-7R5G/011P-4		7.5/11	20/26	17/25
FU9000A-011G/015P-4		11/15	26/35	25/32
FU9000A-015G/018P-4		15/18.5	35/38	32/37
FU9000A-018G/022P-4		18.5/22	38/46	37/45
FU9000A-022G/030P-4		22/30	46/62	45/60
FU9000A-030G/037P-4		30/37	62/76	60/75
FU9000A-037G/045P-4		37/45	76/90	75/89
FU9000A-045G/055P-4		45/55	92/113	91/112
FU9000A-055G/075P-4		55/75	113/157	112/150
FU9000A-075G/090P-4		75/90	157/180	150/176
FU9000A-090G/110P-4		90/110	180/214	176/210
FU9000A-110G/132P-4		110/132	214/256	210/253
FU9000A-132G/160P-4		132/160	256/307	253/304
FU9000A-160G/185P-4		160/185	307/340	300/330
FU9000A-185G/200P-4		185/200	340/385	330/380
FU9000A-200G/220P-4		200/220	385/430	377/426
FU9000A-220G/250P-4		220/250	430/468	426/465
FU9000A-250G/280P-4		250/280	468/525	465/520
FU9000A-280G/315P-4		280/315	525/590	520/585
FU9000A-315G/350P-4		315/350	590/665	585/650
FU9000A-350G-4		350	665	650
FU9000A-400G-4		400	785	725
FU9000A-500G-4		500	883	820
FU9000A-630G-4	630	1080	1000	



**Description:** Frequency Inverter

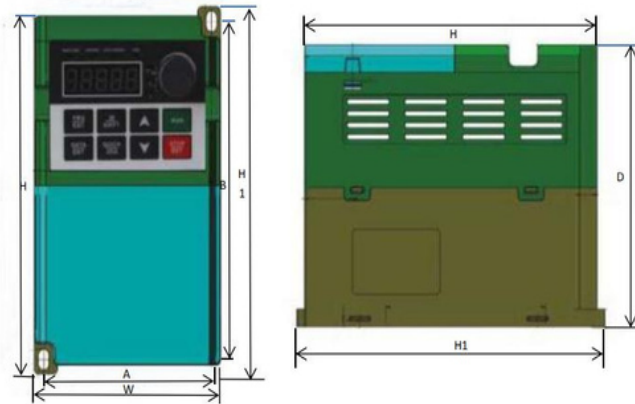
**Model:** FU9000A

**Power Range:** 0.75KW-630KW

**Voltage:** 415V; 380V ; 220V



## INSTALLATION SIZE



Model	Mounting hole mm		Dimensions mm				Installation aperture mm
	A	B	H	H1	W	D	
Three phase 220V							
FU9000A-0R7G-2	115	175	186	/	126	160.6	ø5,0
FU9000A-1R5G-2							
FU9000A-2R2G-2							
Three phase 380V							
FU9000A-0R7G-4	115	175	186	/	126	160.6	ø5,0
FU9000A-1R5G-4							
FU9000A-2R2G-4							
FU9000A-004G/5R5P-4	130.5	243	255.7	/	146.1	172.2	ø5,0
FU9000A-5R5G/7R5P-4							
FU9000A-7R5G/011P-4							
FU9000A-011G/015P-4	152.1	305	321	/	170.6	200.6	ø5,5
FU9000A-015G/018P-4							
FU9000A-018G/022P-4							
FU9000A-022G/030P-4	220	455	/	475	295	245	ø6,0
FU9000A-030G/037P-4							
FU9000A-037G/045P-4							
FU9000A-045G/055P-4	230	560	/	580	375	265	ø8,0
FU9000A-055G/075P-4							
FU9000A-075G/090P-4							
FU9000A-090G/110P-4	320	730	/	755	460	330	ø8,0
FU9000A-110G/132P-4							
FU9000A-132G/160P-4							
FU9000A-160G/185P-4	300	830	/	870	440	350	ø10,0



We also have catalogs  
available in other categories,  
if you are interested in any  
of them, let us know!

▶ **OTHER CATEGORIES**

**AGRICULTURAL IMPLEMENTS**  
**BICYCLES**  
**FORKLIFTS**  
**KITCHEN**  
**LIGHTING**  
**MECHANIC TOOLS**  
**PLASTIC CONTAINERS**  
**SAW BLADE**  
**SURFACES**  
**TOYS**

▶ **AND MORE!**

**[WWW.KJGENTERPRISE.COM](http://WWW.KJGENTERPRISE.COM)**