



**CATALOG**



**CONTACTOR**

**[WWW.KJGENTERPRISE.COM](http://WWW.KJGENTERPRISE.COM)**

# ¿ABOUT US?



## OUR OBJECTIVES

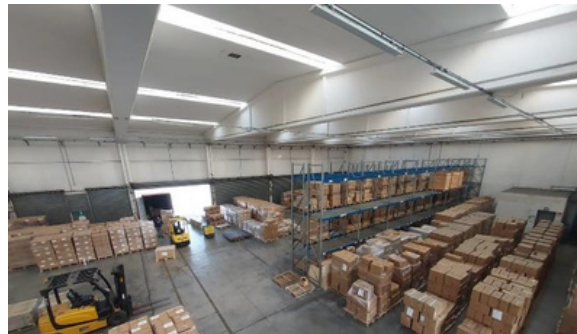
**To create value and solutions in the supply chain of the companies, offering different alternatives of acquisition in products or raw materials, reducing production, operative and logistic costs in the acquisition process.**

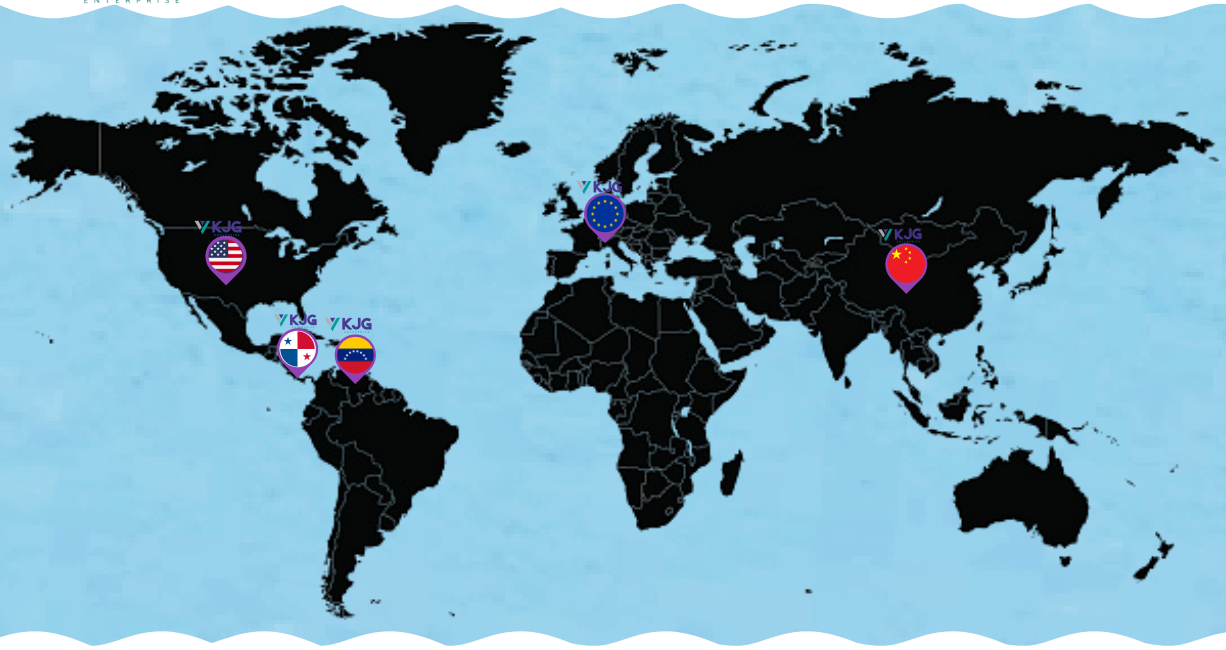
## MISSION

**Our mission is to satisfy the needs of each of our customers, whether they are small, medium or large, guaranteeing quality, price and less work, no matter where they are in the world, providing all the necessary facilities to strengthen their supply chain with our extensive network of contacts, factories and logistics and management partners.**

## VISION

**Our vision is to continue building and consolidating a specialized, efficient and effective organization in the supply of products, diversifying solutions for the needs of each one of our customers.**





## CONTACT US

[WWW.KJGENTERPRISE.COM](http://WWW.KJGENTERPRISE.COM)

0

[info@kjgenterprise.com](mailto:info@kjgenterprise.com)



**We are also here**



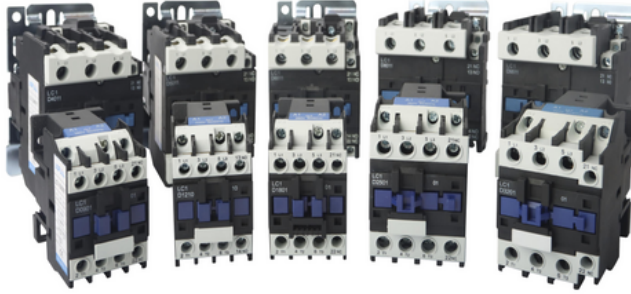
**@KJGWORLDWIDE**



## CONTENTS

LC1-D AC CONTACTOR	.....	1
NLC1-D AC CONTACTOR	.....	3
LP1-D DC CONTACTOR	.....	4
LC1-F AC CONTACTOR	.....	5
LR2-D THERMAL RELAY	.....	6
LE1-D MEGNATIC STARTER	.....	7
GMC AC CONTACTOR	.....	8
LNC1 MODULAR CONTACTOR	.....	9
HVAC CONTACTOR	.....	10

## LC1-D AC CONTACTOR

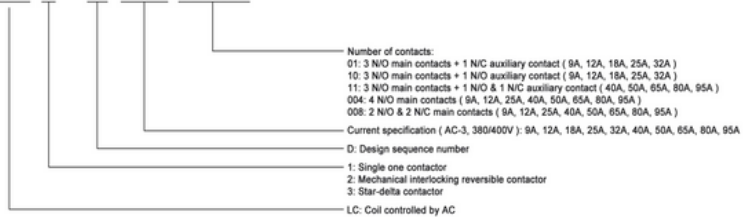


LC1-D AC CONTACTOR

### APPLICATION

1. Rated Current: 9A, 12A, 18A, 25A, 32A, 40A, 50A, 65A, 80A, 95A
2. AC Coil Voltage: 24V, 36V, 42V, 48V, 110V, 127V, 220V, 230V, 240V, 380V, 400V, 415V, 440V, 480V, 500V, 600V, 660V
3. Rated Frequency: 50Hz, 60Hz, 50/60Hz
4. Frame: 3P, 4P
5. Utilization Category: AC-3, AC-4
6. Application: Remote making & breaking circuits, protect circuit from over-load when assembling with thermal over-load relay, frequent start-up and control of AC motor.

LC 1 - D □ □ □ □



## LC1-D AC CONTACTOR



Items		Model	LC1-D09	LC1-D12	LC1-D18	LC1-D25	LC1-D32
Pole Number			3P, 4P	3P, 4P	3P	3P, 4P	3P
Rated Operational Current Ie (A)	380/400V	AC-3	9	12	18	25	32
		AC-4	3.5	5	7.7	8.5	12
	660/690V	AC-3	6.6	8.9	12	18	21
		AC-4	1.5	2	3.8	4.4	7.5
Rated Conventional Heating Current Ith (A)			20	20	32	40	50
Rated Insulation Voltage Ui (V)			690V				
Standard Power Ratings of 3-phase Motors 50/60Hz in Category (kW)	AC-3	220/230V	2.2	3	4	5.5	7.5
		380/400V	4	5.5	7.5	11	15
		415V	4	5.5	9	11	15
		440V	4	5.5	9	11	15
		500V	5.5	7.5	10	15	18.5
		660/690V	5.5	7.5	10	15	18.5
Electrical Life ( $\times 10^6$ operations)		AC-3	100	100	100	100	80
		AC-4	20	20	20	20	20
Mechanical Life ( $\times 10^6$ operations)			10	10	10	10	8
Matching Fuse Model			RT16-20	RT16-20	RT16-32	RT16-40	RT16-50
AC Coil Power 50Hz		Pick-up (VA)	70	70	70	110	110
		Holding (VA)	9.0	9.0	9.5	14.0	14.0
		Power (W)	1.8~2.7	1.8~2.7	3~4	3~4	3~4
Operating Voltage Range		Pick-up	85%Us~110%Us				
		Drop-out	20%Us~75%Us				



Items		Model	LC1-D40	LC1-D50	LC1-D65	LC1-D80	LC1-D95
Pole Number			3P, 4P	3P, 4P	3P, 4P	3P, 4P	3P, 4P
Rated Operational Current Ie (A)	380/400V	AC-3	40	50	65	80	95
		AC-4	18.5	24	28	37	44
	660/690V	AC-3	34	39	42	49	49
		AC-4	9	12	14	17.3	21.3
Rated Conventional Heating Current Ith (A)			60	80	80	125	125
Rated Insulation Voltage Ui (V)			690V				
Standard Power Ratings of 3-phase Motors 50/60Hz in Category (kW)	AC-3	220/230V	11	15	18.5	22	25
		380/400V	18.5	22	30	37	45
		415V	22	25	37	45	45
		440V	22	30	37	45	45
		500V	30	33	37	45	55
		660/690V	30	33	37	45	55
Electrical Life ( $\times 10^6$ operations)		AC-3	80	60	60	60	60
		AC-4	15	15	15	10	10
Mechanical Life ( $\times 10^6$ operations)			8	8	8	6	6
Matching Fuse Model			RT16-63	RT16-80	RT16-80	RT16-100	RT16-125
AC Coil Power 50Hz		Pick-up (VA)	300	300	300	300	300
		Holding (VA)	57.0	57.0	57.0	57.0	57.0
		Power (W)	6~10	6~10	6~10	6~10	6~10
Operating Voltage Range		Pick-up	85%Us~110%Us				
		Drop-out	20%Us~75%Us				

### Standard control circuit voltages

Us(V)	24	36	42	48	110	127	220	230	240
50Hz	B5	C5	D5	E5	F5	G5	M5	P5	U5
60Hz	B6	C6	D6	E6	F6	G6	M6	P6	U6
50/60Hz	B7	C7	D7	E7	F7	G7	M7	P7	U7
Us(V)	380	400	415	440	480	500	600	660	
50Hz	Q5	V5	N5	R5	T5	S5	X5	Y5	
60Hz	Q6	V6	N6	R6	T6	S6	X6	Y6	
50/60Hz	Q7	V7	N7	R7	T7	S7	X7	Y7	

## NLC1-D AC CONTACTOR



NLC1-D AC CONTACTOR

### SPECIFICATION



Items		Model	NLC1-D09	NLC1-D12	NLC1-D18	NLC1-D25	NLC1-D32
Pole Number			3P, 4P	3P, 4P	3P	3P, 4P	3P
Rated Operational Current Ie (A)	380/400V	AC-3	9	12	18	25	32
		AC-4	3.5	5	7.7	8.5	12
Rated Conventional Heating Current Ith (A)			20	20	32	40	50
Rated Insulation Voltage Ui (V)			690V				
Standard Power Ratings of 3-phase Motors 50/60Hz in Category (kW)	AC-3	220/230V	2.2	3	4	5.5	7.5
		380/400V	4	5.5	7.5	11	15
		415V	4	5.5	9	11	15
		440V	4	5.5	9	11	15
		500V	5.5	7.5	10	15	18.5
Electrical Life ( $\times 10^6$ operations)	AC-3		100	100	100	100	80
		AC-4	20	20	20	20	20
Mechanical Life ( $\times 10^6$ operations)			10	10	10	10	8



Items		Model	NLC1-D40	NLC1-D50	NLC1-D65	NLC1-D80	NLC1-D95
Pole Number			3P, 4P	3P, 4P	3P, 4P	3P, 4P	3P, 4P
Rated Operational Current Ie (A)	380/400V	AC-3	40	50	65	80	95
		AC-4	18.5	24	28	37	44
Rated Conventional Heating Current Ith (A)			60	80	80	125	125
Rated Insulation Voltage Ui (V)			690V				
Standard Power Ratings of 3-phase Motors 50/60Hz in Category (kW)	AC-3	220/230V	11	15	18.5	22	25
		380/400V	18.5	22	30	37	45
		415V	22	25	37	45	45
		440V	22	30	37	45	45
		500V	30	33	37	45	55
Electrical Life ( $\times 10^6$ operations)	AC-3		80	60	60	60	60
		AC-4	15	15	15	10	10
Mechanical Life ( $\times 10^6$ operations)			8	8	8	6	6

### Standard control circuit voltages

Us(V)	24	36	42	48	110	127	220	230	240
50Hz	B5	C5	D5	E5	F5	G5	M5	P5	U5
60Hz	B6	C6	D6	E6	F6	G6	M6	P6	U6
50/60Hz	B7	C7	D7	E7	F7	G7	M7	P7	U7
Us(V)	380	400	415	440	480	500	600	660	
50Hz	Q5	V5	N5	R5	T5	S5	X5	Y5	
60Hz	Q6	V6	N6	R6	T6	S6	X6	Y6	
50/60Hz	Q7	V7	N7	R7	T7	S7	X7	Y7	

## LP1-D AC CONTACTOR



LP1-D AC CONTACTOR

### SPECIFICATION



Items		Model	LP1-D09	LP1-D12	LP1-D18	LP1-D25	LP1-D32
Pole Number			3P, 4P	3P, 4P	3P	3P, 4P	3P
Coil Voltage (VDC)			24, 48, 110, 220				
Rated Operational Current I <sub>e</sub> (A)	380/400V	AC-3	9	12	18	25	32
		AC-4	3.5	5	7.7	8.5	12
	660/690V	AC-3	6.6	8.9	12	18	21
		AC-4	1.5	2	3.8	4.4	7.5
Rated Conventional Heating Current I <sub>th</sub> (A)			20	20	32	40	50
Rated Insulation Voltage U <sub>i</sub> (V)			690	690	690	690	690
Standard Power Ratings of 3-phase Motors 50/60Hz in Category <small>AC-3</small>	AC-3	220/230V	2.2	3	4	5.5	7.5
		380/400V	4	5.5	7.5	11	15
	AC-4	660/690V	5.5	7.5	10	15	18.5
Electrical Life (× 10 <sup>4</sup> operations)			100	100	100	100	80
			20	20	20	20	20
Mechanical Life (× 10 <sup>6</sup> operations)			10	10	10	10	8
Matching Fuse Model			RT16-20	RT16-20	RT16-32	RT16-40	RT16-50
DC Coil Power		Pick-up (VA) Holding (VA)	9	9	11	11	11
Operation Range		Pick-up Voltage Drop-out Voltage	85%Us~110%Us 10%Us~75%Us				



Items		Model	LP1-D40	LP1-D50	LP1-D65	LP1-D80	LP1-D95
Pole Number			3P, 4P	3P, 4P	3P, 4P	3P, 4P	3P, 4P
Coil Voltage (VDC)			24, 48, 110, 220				
Rated Operational Current I <sub>e</sub> (A)	380/400V	AC-3	40	50	65	80	95
		AC-4	18.5	24	28	37	44
	660/690V	AC-3	34	39	42	49	49
		AC-4	9	12	14	17.3	21.3
Rated Conventional Heating Current I <sub>th</sub> (A)			60	80	80	110	110
Rated Insulation Voltage U <sub>i</sub> (V)			690V				
Standard Power Ratings of 3-phase Motors 50/60Hz in Category <small>AC-3</small>	AC-3	220/230V	11	15	18.5	22	25
		380/400V	18.5	22	30	37	45
	AC-4	660/690V	22	30	37	55	55
Electrical Life (× 10 <sup>4</sup> operations)			80	60	60	60	60
			15	15	15	15	15
Mechanical Life (× 10 <sup>6</sup> operations)			8	8	8	6	6
Matching Fuse Model			RT16-63	RT16-80	RT16-80	RT16-100	RT16-125
DC Coil Power		Pick-up (VA) Holding (VA)	20	20	20	20	20
Operation Range		Pick-up Voltage Drop-out Voltage	85%Us~110%Us 10%Us~75%Us				



## LC1-F AC CONTACTOR



LC1-F AC CONTACTOR

### SPECIFICATION



Items		Model	LC1-F115	LC1-F150	LC1-F185	LC1-F225	LC1-F265	LC1-F330
Pole Number			3P, 4P	3P, 4P	3P, 4P	3P, 4P	3P, 4P	3P, 4P
Coil Voltage (VDC)			24, 48, 110, 220					
Rated Operational Current I <sub>e</sub> (A)	(U <sub>e</sub> ≤ 440V)	AC-3, θ ≤ 55°C	115	150	185	255	265	330
		AC-1, θ ≤ 40°C	200	250		315	350	400
Rated Operational Voltage U <sub>e</sub> (V)		50/60Hz	24~1000					
Rated Conventional Heating Current I <sub>th</sub> (A)		θ ≤ 40°C	200	250	275	315	350	400
Rated Insulation Voltage U <sub>i</sub> (V)		IEC60947	1000	1000	1000	1000	1000	1000
Standard Power Ratings of 3-phase Motors 50/60Hz in Category AC-3 θ ≤ 60°C	AC-3	220/240V	30	40	55	63	75	100
		380/400V	55	75	90	110	132	160
		415V	59	80	100	110	140	180
		440V	59	80	100	110	140	200
		500V	75	90	110	129	160	200
		660/690V	65	100	110	129	160	200
1000V	80	65	100	100	147	160		
Electrical Life (×10 <sup>6</sup> operations)		AC-3	1.2	1.2	1	1	0.8	0.8
Mechanical Life (×10 <sup>6</sup> operations)			10	10	10	10	10	10



Items		Model	LC1-F400	LC1-F500	LC1-F630	LC1-F780	LC1-F800	LC1-F1000
Pole Number			2P, 3P, 4P	2P, 3P, 4P	2P, 3P, 4P	3P, 4P	3P	3P
Rated Operational Current I <sub>e</sub> (A)	(U <sub>e</sub> ≤ 440V)	AC-3, θ ≤ 55°C	400	500	630	780	800	1000
		AC-1, θ ≤ 40°C	500	700	1000	1600	1000	1250
Rated Operational Voltage U <sub>e</sub> (V)		50/60Hz	48~1000					
Rated Conventional Heating Current I <sub>th</sub> (A)		θ ≤ 40°C	500	700	1000	1600	1000	1250
Rated Insulation Voltage U <sub>i</sub> (V)		IEC60947	1000	1000	1000	1000	1000	1000
Standard Power Ratings of 3-phase Motors 50/60Hz in Category AC-3 θ ≤ 60°C	AC-3	220/240V	110	147	200	220	250	315
		380/400V	200	250	335	400	450	560
		415V	200	280	375	425	450	630
		440V	250	295	400	425	450	670
		500V	257	355	400	450	450	-
		660/690V	280	335	450	475	475	-
1000V	185	335	450	450	450	-		
Electrical Life (×10 <sup>4</sup> operations)		AC-3	0.8	0.8	0.8	0.8	0.6	0.5
Mechanical Life (×10 <sup>6</sup> operations)			10	10	5	5	5	0.5

## LR2 THERMAL OVERLOAD RELAY



LR2 THERMAL OVERLOAD RELAY

### SPECIFICATION



Model Type		Rated Operational Current I <sub>e</sub> (A)	Rated Setting Range (A)	Assembled Contactor
LR2-D13	1301	25	0.10~0.16	LC1-D09 ~ LC1-D32
	1302		0.16~0.25	LC1-D09 ~ LC1-D32
	1303		0.25~0.40	LC1-D09 ~ LC1-D32
	1304		0.40~6.3	LC1-D09 ~ LC1-D32
	1305		0.63~1.0	LC1-D09 ~ LC1-D32
	1306		1.0~1.6	LC1-D09 ~ LC1-D32
	1307		1.6~2.5	LC1-D09 ~ LC1-D32
	1308		2.5~4.0	LC1-D09 ~ LC1-D32
	1310		4.0~6.0	LC1-D09 ~ LC1-D32
	1312		5.5~8.0	LC1-D12 ~ LC1-D32
	1314		7.0~10.0	LC1-D18 ~ LC1-D32
	1316		9.0~13.0	LC1-D25 ~ LC1-D32
	1321		12.0~18.0	LC1-D25 ~ LC1-D32
1322	17.0~25.0	LC1-D32		
LR2-D23	2353	36	23.0~32.0	LC1-D25 ~ LC1-D32
	2355		28.0~36.0	LC1-D25 ~ LC1-D32
LR2-D33	3353	93	23.0~32.0	LC1-D40 ~ LC1-D95
	3355		30.0~40.0	LC1-D40 ~ LC1-D95
	3357		37.0~50.0	LC1-D50 ~ LC1-D95
	3359		48.0~65.0	LC1-D50 ~ LC1-D95
	3361		55.0~70.0	LC1-D65 ~ LC1-D95
	3363		63.0~80.0	LC1-D80 ~ LC1-D95
	3365		80.0~93.0	LC1-D95

## LE1-D MAGNETIC STARTER



LE1-D MAGNETIC STARTER

### SPECIFICATION

Max. Power AC-3 Duty (kW)			Max. Operational Current (A)	Code Number		Suitable Thermal Relay	Type of Enclosure
220/230V	380/400V	415/440V		LL (Long Life)	NL (Normal Life)		
2.2	4	4	9	LE1-D094... LE1-D093...	- -	LR2-D1312 LR2-D1314	IP42, IP65
3	5.5	5.5	12	LE1-D124... LE1-D123...	LE1-D094... LE1-D093...	LR2-D1316	IP42, IP65
4	7.5	9	18	LE1-D188... LE1-D185...	LE1-D124... LE1-D123...	LR2-D1321	IP42, IP65
5.5	11	11	25	LE1-D258... LE1-D255...	LE1-D188... LE1-D185...	LR2-D1322 LR2-D2353	IP42, IP65
7.5	15	15	32	LE1-D325...	LE1-D255...	LR2-D2355	IP55
11	18.5	22	40	LE1-D405...	LE1-D325...	LR2-D2355	IP55
15	22	25	50	LE1-D505...	LE1-D405...	LR2-D3357 LR2-D3355	IP55
18.5	30	37	65	LE1-D655...	LE1-D505...	LR2-D3361	IP55
22	37	45	80	LE1-D805...	LE1-D655...	LR2-D3363 LR2-D3365	IP55
25	45	45	95	LE1-D955...	LE1-D805...	LR2-D3365	IP55



## GMC AC CONTACTOR



GMC AC CONTACTOR

### SPECIFICATION



Items		Model	GMC-9	GMC-12	GMC-18	GMC-22	GMC-32	
Pole Number			3P, 4P					
Coil Voltage (VAC)		50Hz	24, 42, 48, 100, 110, 220, 240, 380, 400, 415, 440, 500, 550					
		60Hz	24, 48, 110, 120, 208, 220, 240, 277, 380, 440, 480, 600					
<b>IEC60947-4:</b>								
Rated Operational Current Ie (A)	AC-3	220/240V	11	13	18	22	32	
		380/400V	9	12	18	22	32	
		500/550V	7	12	13	22	28	
		690V	5	9	9	18	20	
Standard Power Ratings of 3-phase Motors 50/60Hz in Category (kW)	AC-1	-	25	25	40	40	50	
	AC-3	220/240V	2.5	3.5	4.5	5.5	7.5	
Standard Power Ratings of 3-phase Motors 50/60Hz in Category (hp)	AC-3	380/400V	4	5.5	7.5	11	15	
		500/550V	4	7.5	7.5	15	18.5	
		690V	4	7.5	7.5	15	18.5	
		690V	4	7.5	7.5	15	18.5	
<b>UL508:</b>								
Continuous Current (A)			20	25	30	32	45	
Standard Power Ratings of Motors 50/60Hz in Category (hp)	1 Phase	115V	0.5	0.5	1	2	2	
		230V	1	2	3	3	5	
		200V	2	3	5	7	7.5	
	3 Phase	230V	2	3	5	7.5	10	
		460V	5	7.5	10	10	20	
		575V	7.5	10	15	15	20	
Rated Insulation Voltage Ui (V)			690V				1000V	
Electrical Life ( $\times 10^6$ operations)		AC-3	25	25	25	25	20	
Mechanical Life ( $\times 10^6$ operations)			25	25	25	25	15	
Standard Auxiliary Contact			1NO 1NC	1NO 1NC	1NO 1NC	1NO 1NC	2NO 2NC	
Items		Model	GMC-40	GMC-50	GMC-65	GMC-75	GMC-85	
Pole Number			3P, 4P					
Coil Voltage (VAC)		50Hz	24, 42, 48, 100, 110, 220, 240, 380, 400, 415, 440, 500, 550					
		60Hz	24, 48, 110, 120, 208, 220, 240, 277, 380, 440, 480, 600					
<b>IEC60947-4:</b>								
Rated Operational Current Ie (A)	AC-3	220/240V	40	55	65	75	85	
		380/400V	40	50	65	75	85	
		500/550V	32	43	60	65	75	
		690V	23	28	35	42	45	
Standard Power Ratings of 3-phase Motors 50/60Hz in Category (kW)	AC-1	-	60	80	100	110	135	
	AC-3	220/230V	11	15	18.5	22	25	
Standard Power Ratings of 3-phase Motors 50-60Hz in Category (hp)	AC-3	380/400V	18.5	22	30	37	45	
		500V	22	30	33	37	45	
		660/690V	22	30	33	37	45	
		660/690V	22	30	33	37	45	
<b>UL508:</b>								
Continuous Current (A)			50	70	80	90	100	
Standard Power Ratings of Motors 50-60Hz in Category (hp)	1 Phase	115V	3	3	5	5	7.5	
		230V	5	7.5	10	15	15	
		200V	10	10	15	20	25	
	3 Phase	230V	10	15	20	25	30	
		460V	25	30	40	50	50	
		575V	25	30	40	50	50	
Rated Insulation Voltage Ui (V)			1000V					
Electrical Life ( $\times 10^6$ operations)		AC-3	20	20	20	20	20	
Mechanical Life ( $\times 10^6$ operations)			15	10	10	10	10	
Standard Auxiliary Contact			2NO 2NC	2NO 2NC	2NO 2NC	2NO 2NC	2NO 2NC	

## LNC1 MODULAR CONTACTOR



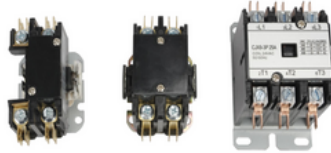
LNC1 MODULAR CONTACTOR

### SPECIFICATION

Items		Model	LNC1-16	LNC1-20	LNC1-25	LNC1-40	LNC1-63	LNC1-100
Pole Number			1P, 2P, 4P			2P, 4P		2P, 4P
Rated Operational Current I <sub>e</sub> (A)	AC-7a		16	20	25	40	63	100
	AC-7b		6	7	9	18	25	-
Rated Operational Voltage U <sub>e</sub> (V)			1P, 2P: 250V; 3P, 4P: 400V					
Rated Conventional Heating Current I <sub>th</sub> (A)			25	25	25	63	63	100
Rated Control Voltage (V)		50/60Hz	24, 110, 230					
Rated Insulation Voltage U <sub>i</sub> (V)			500V					
Control Power (kW)	AC-7a	230V	3.5	4.5	5.5	9	14	22
		400V	6.5	8	10	16	25	38
	AC-7b	230V	1.4	1.6	2	3.5	4.5	6.5
		400V	2.4	2.8	3.4	6	8	11
Rated Frequency (Hz)			50Hz, 60Hz, 50/60Hz					
Max. Number of Switch Operations	1 hour		30 operations					
	1 day		100 operations					
Electrical Life ( $\times 10^4$ operations)			10	10	10	10	10	10
Mechanical Life ( $\times 10^5$ operations)			10	10	10	10	10	10
Numbers of Main Contact	1P		1NO, 1NC			-		
	2P		2NO, 2NC, 1NO+1NC					2NO
	4P		4NO, 4NC, 2NO+2NC, 3NO+1NC					4NO
Width (9mm Modules)	1P		2			-		
	2P		2			4		6
	4P		4			6		12



## CJX9 AIR CONDITION CONTACTOR



CJX9 AIR CONDITIONAL CONTACTOR

### SPECIFICATION



Items	*FLA Current	20A	25A	30A	40A	50A	60A	75A	
Pole Number		1P, 2P, 3P		1P, 2P, 3P		3P			
RES Current (A)		30	35	40	50	65	75	90	
Standard Coil Voltage (VAC)		24, 120, 240							
LRA Current (A)	1P	240/277V	120	125	125	160	-	-	-
		480V	100	125	125	160	-	-	-
		600V	80	100	100	120	-	-	-
	2P	240/277V	100	125	125	160	-	-	-
		480V	100	125	125	160	-	-	-
		600V	80	100	100	120	-	-	-
	3P	240/277V	120	150	180	240	300	360	450
		480V	100	125	150	200	250	300	375
		600V	80	100	100	120	200	240	300
Numbers of Contact	1P	1NO				-			
	2P	2NO				-			
	3P	3NO							
Note		FLA: Full Load Amperes							
		RES: Resistive Amperes							
		LRA: Locked Rotor Amperes							

**AGRICULTURAL IMPLEMENTS**  
**BICYCLES**  
**FORKLIFTS**  
**KITCHEN**  
**LIGHTING**  
**MECHANIC TOOLS**  
**PLASTIC CONTAINERS**  
**SAW BLADE**  
**SURFACES**  
**TOYS**



**OTHER CATEGORIES**

**We also have catalogs available in other categories, if you are interested in any of them, let us know!**



**AND MORE!**