


**CATALOG**



**OCL REACTOR**

# ¿ABOUT US?



## OUR OBJECTIVES

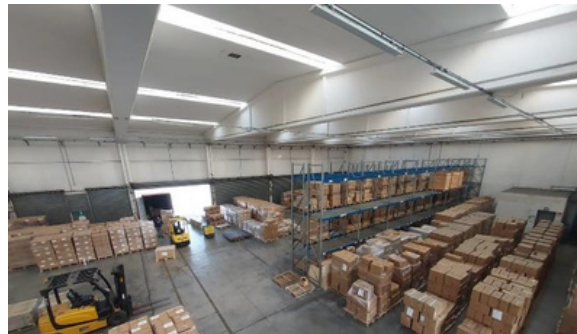
**To create value and solutions in the supply chain of the companies, offering different alternatives of acquisition in products or raw materials, reducing production, operative and logistic costs in the acquisition process.**

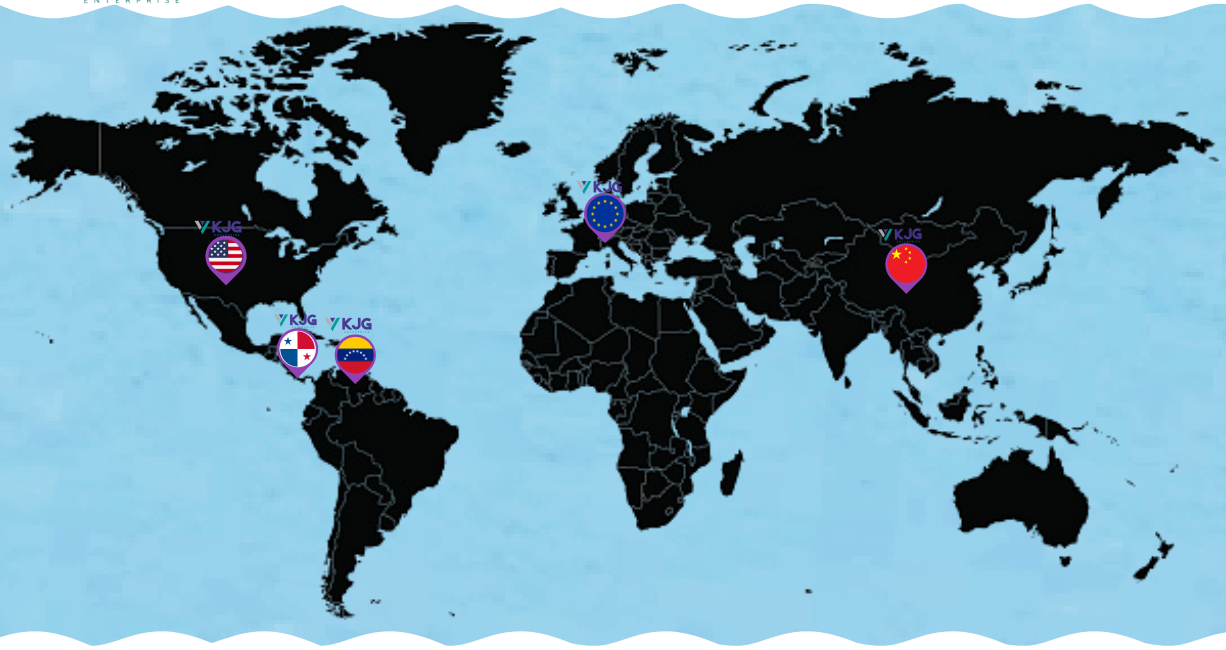
## MISSION

**Our mission is to satisfy the needs of each of our customers, whether they are small, medium or large, guaranteeing quality, price and less work, no matter where they are in the world, providing all the necessary facilities to strengthen their supply chain with our extensive network of contacts, factories and logistics and management partners.**

## VISION

**Our vision is to continue building and consolidating a specialized, efficient and effective organization in the supply of products, diversifying solutions for the needs of each one of our customers.**





## CONTACT US

[WWW.KJGENTERPRISE.COM](http://WWW.KJGENTERPRISE.COM)

0

[info@kjgenterprise.com](mailto:info@kjgenterprise.com)



**We are also here**



**@KJGWORLDWIDE**



# OCL REACTOR

## USFULL AC output reactor



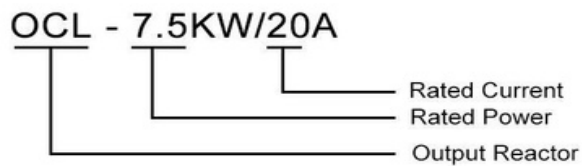
OCL AC output reactor

### Main Features

USFULL AC output reactor, small size, low temperature rise, low noise.  
The output reactor will help to reduce power attenuation because of long distance, filter harmonic current and harmonic voltage.

### Required Ambient

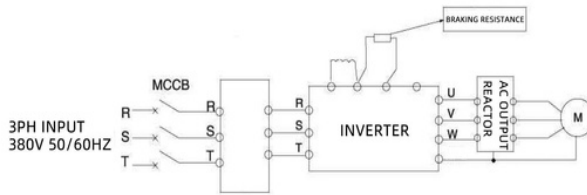
- 1, Altitude < 1000m.
- 2, Running temperature -25°C~+45°C, relevant humidity < 90%
- 3, No harmful gas around, no flammable and explosive materials.
- 4, Good ventilation conditions are needed. If installed in a cabinet, ventilation equipment should be installed.



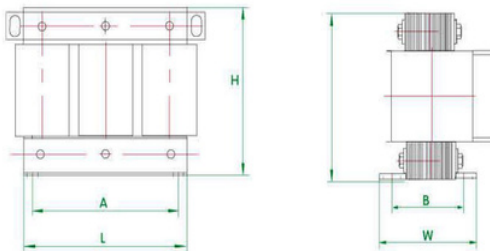
### Specification

Inverter Power (KW)	Reactor Model	Rated Current (A)	Outside Dimension L*W*H (MM)	Installation Size (MM)	Voltage Drop (V)	Inductance (MH)
0.75	OCL-0.75KW/5A	5	110*110*130	90*65	2.2V/1%	1.4
1.5	OCL-1.5KW/5A	5	110*110*130	90*65	2.2V/1%	1.4
2.2	OCL-2.2KW/10A	10	110*110*130	90*65	2.2V/1%	1
4	OCL- 4KW/15A	15	110*110*130	90*65	2.2V/1%	0.47
5.5	OCL-5.5KW/15A	15	155*130*130	95*80	2.2V/1%	0.47
7.5	OCL-7.5KW/20A	20	155*130*130	95*80	2.2V/1%	0.35
11	OCL-11KW/30A	30	155*130*130	95*80	2.2V/1%	0.23
15	OCL-15KW/40A	40	155*130*130	95*80	2.2V/1%	0.18
18	OCL-18KW/50A	50	155*130*130	95*80	2.2V/1%	0.14
22	OCL-22KW/60A	60	195*130*165	120*70	2.2V/1%	0.12
30	OCL-30KW/80A	80	195*130*165	120*70	2.2V/1%	0.087
37	OCL-37KW/110A	110	195*130*165	120*70	2.2V/1%	0.078
45	OCL-45KW/125A	125	195*130*165	120*90	2.2V/1%	0.064
55	OCL-55KW/150A	150	250*170*230	180*85	2.2V/1%	0.056
75	OCL-75KW/200A	200	250*170*230	180*85	2.2V/1%	0.035
90	OCL-90KW/250A	250	250*170*230	180*85	2.2V/1%	0.028
110	OCL-110KW/275A	275	250*170*230	180*85	2.2V/1%	0.025
132	OCL-132KW/330A	330	290*190*250	215*100	2.2V/1%	0.021

### Wiring Diagram



### Dimension



Outside Dimension: L\*W\*H(mm) Installation Size: A\*B(mm)



**We also have catalogs  
available in other categories,  
if you are interested in any  
of them, let us know!**

 **OTHER CATEGORIES**

**AGRICULTURAL IMPLEMENTS**

**BICYCLES**

**FORKLIFTS**

**KITCHEN**

**LIGHTING**

**MECHANIC TOOLS**

**PLASTIC CONTAINERS**

**SAW BLADE**

**SURFACES**

**TOYS**

 **AND MORE!**

**[WWW.KJGENTERPRISE.COM](http://WWW.KJGENTERPRISE.COM)**