



CATALOG



SOLAR PUMP INVERTER

WWW.KJGENTERPRISE.COM

¿ABOUT US?



OUR OBJECTIVES

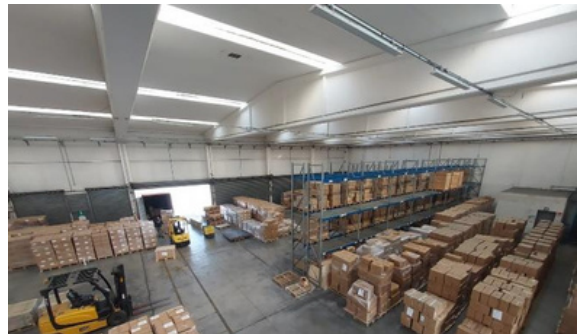
To create value and solutions in the supply chain of the companies, offering different alternatives of acquisition in products or raw materials, reducing production, operative and logistic costs in the acquisition process.

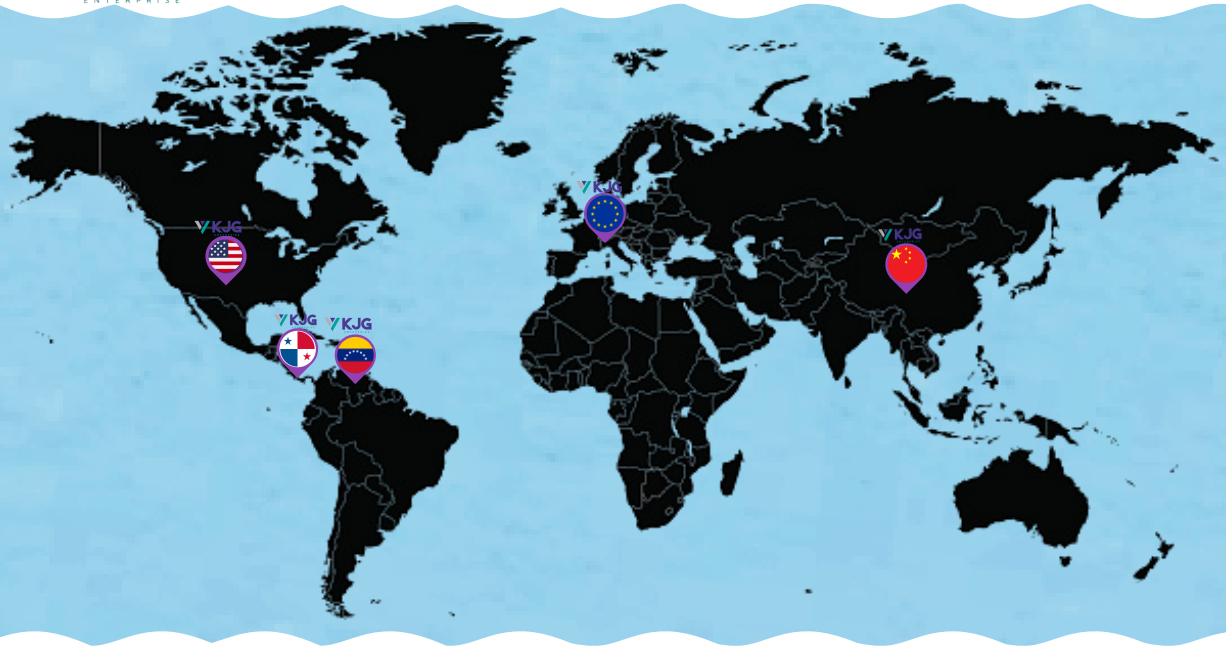
MISSION

Our mission is to satisfy the needs of each of our customers, whether they are small, medium or large, guaranteeing quality, price and less work, no matter where they are in the world, providing all the necessary facilities to strengthen their supply chain with our extensive network of contacts, factories and logistics and management partners.

VISION

Our vision is to continue building and consolidating a specialized, efficient and effective organization in the supply of products, diversifying solutions for the needs of each one of our customers.





CONTACT US

WWW.KJGENTERPRISE.COM

0

info@kjgenterprise.com



We are also here

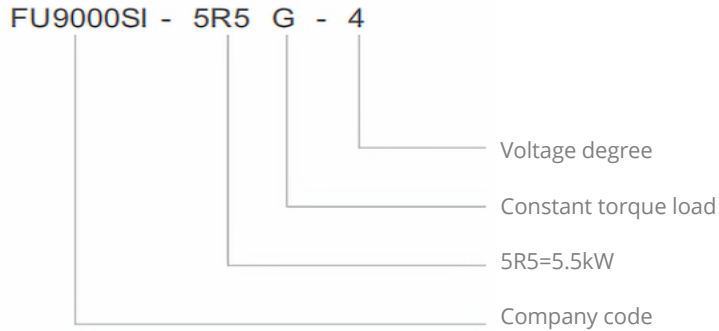
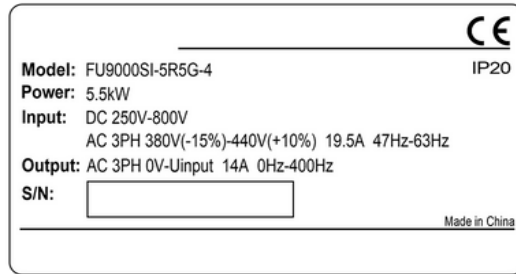


@KJGWORLDWIDE



SOLAR PUMP INVERTER

Type Designation



Voltage Degree

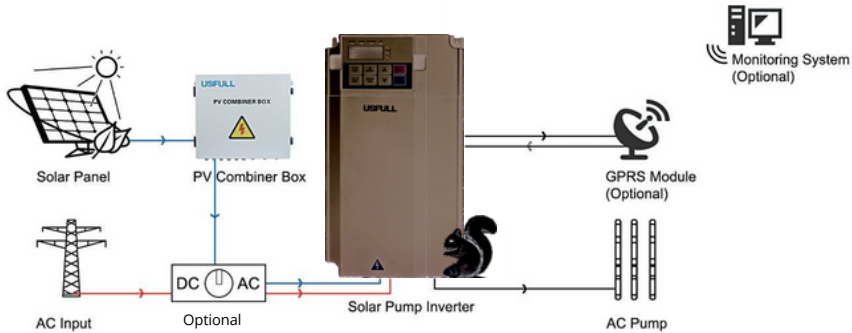
Item	-SS2	-S2	-2	-4
AC Input Voltage (V AC)	1 Phase 220(-15%) ~240(+10%)		3 Phase 220(-15%) ~240(+10%)	3 Phase 380(-15%) ~440(+10%)
Output Voltage (V AC)	1 Phase 0~220V	3 Phase 0~220V		3 Phase 0~380V
Max. DC Voltage (V DC)	400			800
Start-up Voltage (V DC)	200			300
Lowest Working Voltage (V DC)	150			250
Recommend DC Input Voltage Range (V DC)	200~400			300~750
Recommend MPP Voltage (V DC)	330			550
Output Frequency	0~400Hz			

Rated Specifications

Series	Model	Rated Output Power (kW)	Rated Input Current (A)	Rated Output Current (A)
-SS2 (0.75kW-4kW)	FU9000SI-0R7G-SS2	0.75	9.3	7.2
	FU9000SI-1R5G-SS2	1.5	15.7	10.2
	FU9000SI-2R2G-SS2	2.2	24	14
	FU9000SI-004G-SS2	4	32	25
-S2 (0.75kW-2.2kW)	FU9000SI-0R7G-S2	0.75	9.3	4.2
	FU9000SI-1R5G-S2	1.5	15.7	7.5
	FU9000SI-2R2G-S2	2.2	24	10
-4 (0.75kW-110kW)	FU9000SI-0R7G-4	0.75	3.4	2.5
	FU9000SI-1R5G-4	1.5	5	4.2
	FU9000SI-2R2G-4	2.2	5.8	5.5
	FU9000SI-004G-4	4	13.5	9.5
	FU9000SI-5R5G-4	5.5	19.5	14
	FU9000SI-7R5G-4	7.5	25	18.5
	FU9000SI-011G-4	11	32	25
	FU9000SI-015G-4	15	32	32
	FU9000SI-018G-4	18.5	40	38
	FU9000SI-022G-4	22	47	45
	FU9000SI-030G-4	30	51	60
	FU9000SI-037G-4	37	70	75
	FU9000SI-045G-4	45	80	92
	FU9000SI-055G-4	55	94	115
	FU9000SI-075G-4	75	128	150
	FU9000SI-090G-4	90	160	180
	FU9000SI-110G-4	110	190	215
	FU9000SI-132G-4	132	225	260
	FU9000SI-160G-4	160	265	305
	FU9000SI-185G-4	185	310	340
FU9000SI-200G-4	200	345	380	
FU9000SI-250G-4	250	385	465	
FU9000SI-280G-4	280	468	520	
FU9000SI-315G-4	315	525	585	



Introduction of USFULL Solar Pumping System



- **High Efficiency Automatic MPPT**

Maximum power point tracking function guarantees the system get the highest power output from solar panel and maximizes the efficiency of pumping system.

- **Best Off-grid Solution**

For off-grid area, solar pump inverter without battery is the most ideal solution for pumping.

- **Professional Pump Protection**

Automatic start and stop in the morning, for full tank and water shortage of water well.

- **Easy Operation Program**

The inverter is full automatic. After connect cables correctly, power on and it will run.



We also have catalogs available in other categories, if you are interested in any of them, let us know!



WWW.KJGENTERPRISE.COM